



11 Elysian House St. Saviours Road

, St. Helier, JE2 4GJ

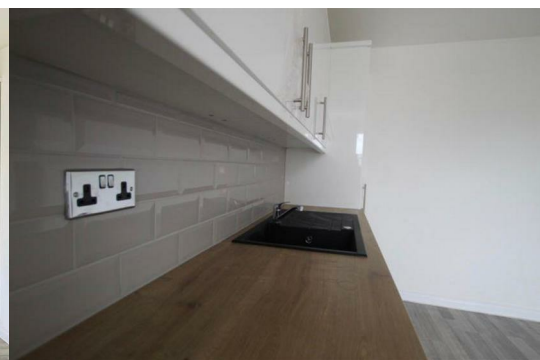
Asking price £259,000



We are delighted to present this beautifully appointed two-bedroom apartment, located on the second floor of a recently renovated townhouse.

Light and airy throughout, the apartment features large windows that flood the space with natural light. The accommodation offers a spacious open-plan kitchen, dining and living area that is fully equipped and ideal for modern living. There is a generous double bedroom, a further single bedroom, and a stylish fully tiled shower room.

Although the property does not include parking, its prime location within easy walking distance of the town centre makes it an excellent choice for those seeking convenience and lifestyle.



Entrance Hall

Entrance hall with doors to open plan kitchen / lounge / diner, bedrooms 1 & 2 plus house shower room. Wood effect grey flooring & recessed lighting.

Kitchen / lounge / dining 14'9" x 14'3" (4.5 x 4.35)

Kitchen with a range of high and low high white gloss kitchen units with wooden worktops and tiled splash backs. Integrated appliance including oven, microwave, dish washer, fridge / freezer & integrated hobs with extractor over. 2 large windows allow plenty of light in giving the living area a very light and airy feel. Wood effect grey flooring, recessed lighting.

House shower room 8'7" x 3'3" (2.64 x 1.0)

Fully tiled walls & floor. Shower, WC, wash hand basin with cupboard below and mirror above, heated towel rail and recessed lighting.

Bedroom 1 12'4" x 11'1" (3.76 x 3.4)

Large double bedroom laid to carpet with window overlooking the rear of the property letting in plenty of natural light. Recessed lighting.

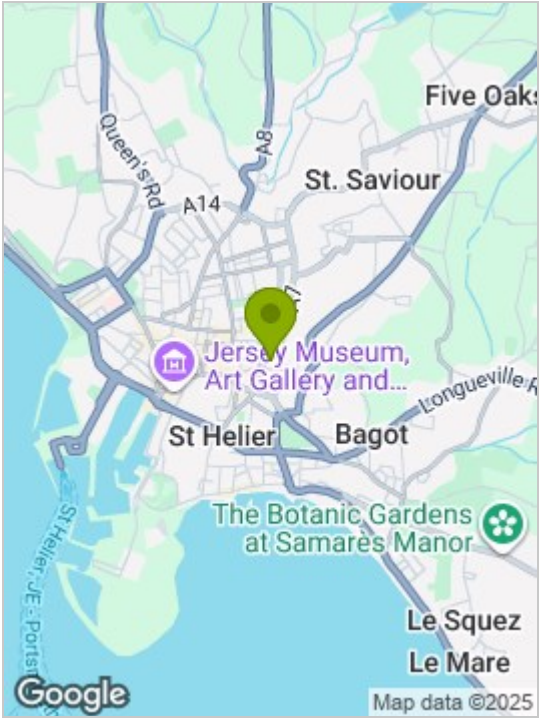
Bedroom 2 14'9" x 6'2" (4.5 x 1.9)

Single bedroom laid to carpet with large window letting in plenty of natural light. Recessed lighting.

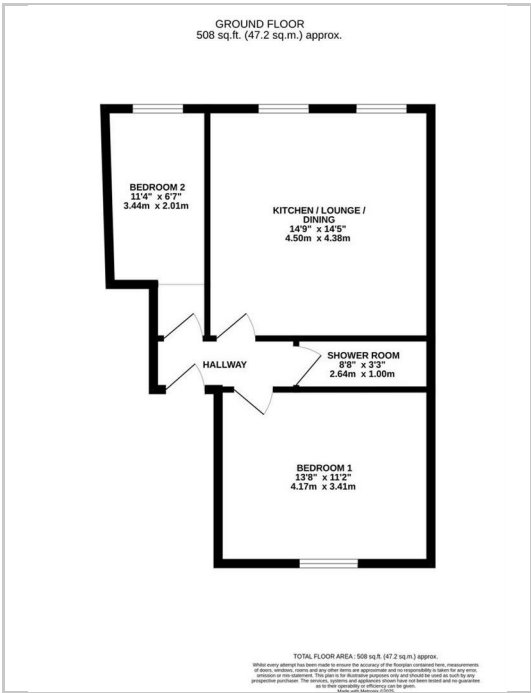
Services

All mains excluding gas. Electric heating. Service charge £150/month covering Association fees, buildings insurance, communal cleaning, emergency lights maintenance, fire alarm panel maintenance, fire extinguishers, weekly fire testing, general repairs, grounds maintenance, gutter cleaning, hot water cylinder servicing, communal electricity, communal water & sinking fund.

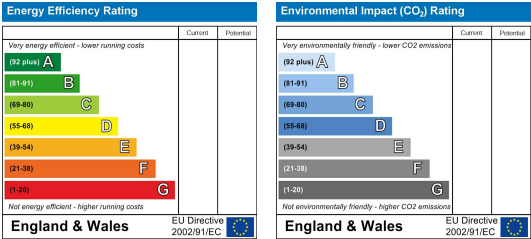
Area Map



Floor Plan



Energy Efficiency Graph



These particulars, whilst believed to be accurate are set out as a general outline only for guidance and do not constitute any part of an offer or contract. Intending purchasers should not rely on them as statements of representation of fact, but must satisfy themselves by inspection or otherwise as to their accuracy. No person in this firms employment has the authority to make or give any representation or warranty in respect of the property.